



S A F E T Y O N D E M A N D

Quick Start

TagPrint Xpress Electrical Quick Start Guide

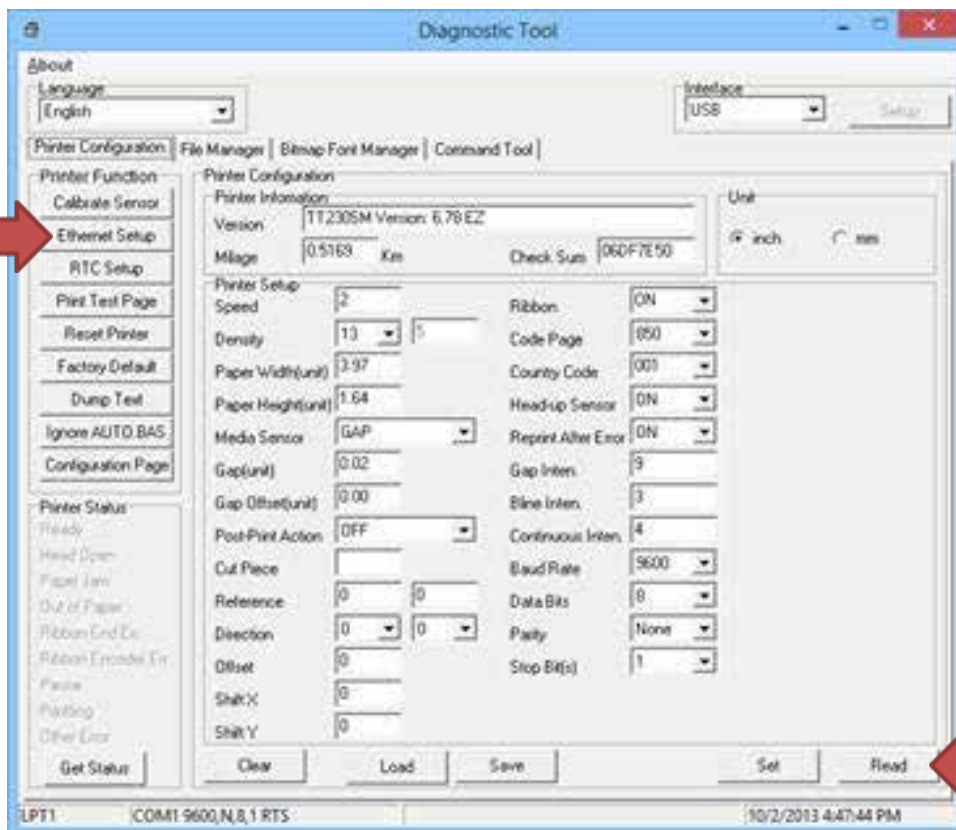
Thank you for downloading TagPrint Xpress Electrical, HellermannTyton's quick and easy solution to code compliance. This mobile application serves all electrical center labeling applications as both an informational resource and printing tool. Simply go to Electrical Labels in the app and choose either an Informational category or a Create category to begin using it.

To print, TagPrint Xpress Electrical requires you to have a HellermannTyton printer configured on your network and that your mobile device is connected to that network.

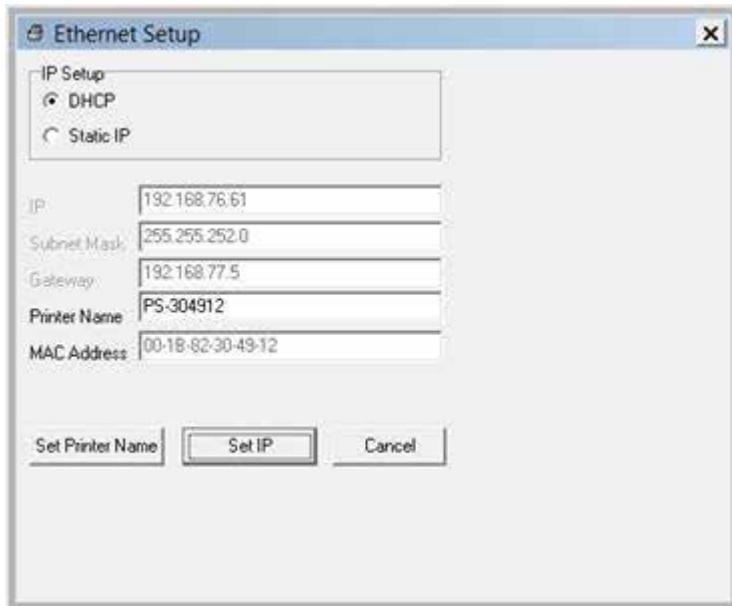
This guide provides a brief overview of how to connect your HellermannTyton TT230SM, TT230SMC, TTM430 or TTM460 thermal transfer printers to a network and print labels using TagPrint Xpress Electrical.

Step 1: Connecting the printer to the network

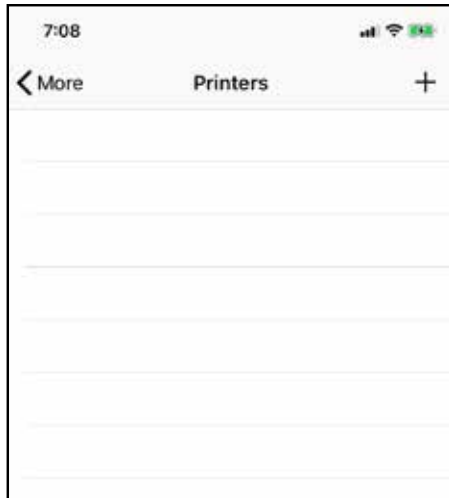
1. For initial printer setup, first determine the printer's IP address. The easiest way to do this is by connecting the printer to a computer and installing the printer driver. To start this process, connect the HellermannTyton brand printer to a computer using the USB cable included with the printer. Note: Only HellermannTyton brand printers will connect to the TagPrint Xpress Electrical mobile app.
2. Turn on the printer's power.
3. Locate the USB stick that came with your printer and plug it into your computer. Once loaded, click on the file "DiagTool_V1.54.exe."
4. Select "Read" from the bottom right corner to get information about the printer and select "Ethernet Setup" on the left side of the Diagnostic Tool screen.



5. Choose between “Static IP” and “DHCP.” If the DHCP network protocol is preferred, write down the IP address shown on the screen and skip to Step 9. If using a static IP address, continue to Step 6.



6. Enter a free IP address and the correct Subnet Mask.
7. Select “Set” in the bottom right corner of the Diagnostic Tool window.
8. Close the Diagnostic Tool.
9. Connect the printer to the network using an ethernet cable.

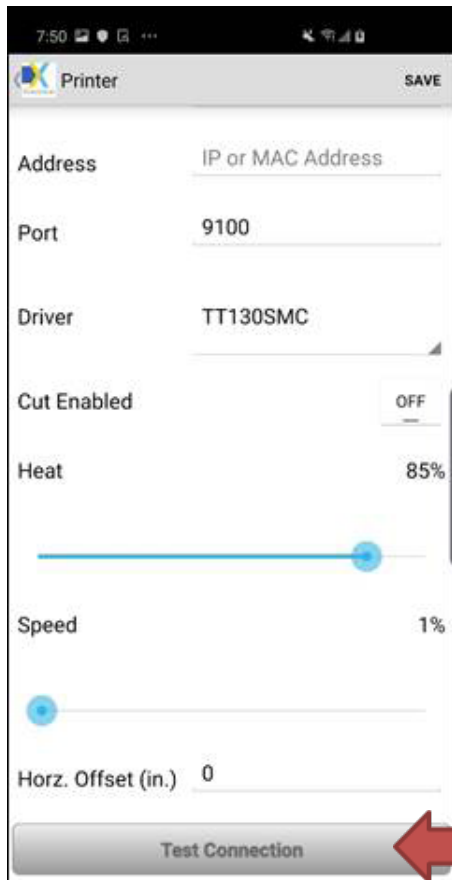


Step 2: Adding the printer to TagPrint Xpress Electrical

1. Open the TagPrint Xpress Electrical app.
2. Navigate to the "More" tab and select printers, then press the "+" in the upper right corner.

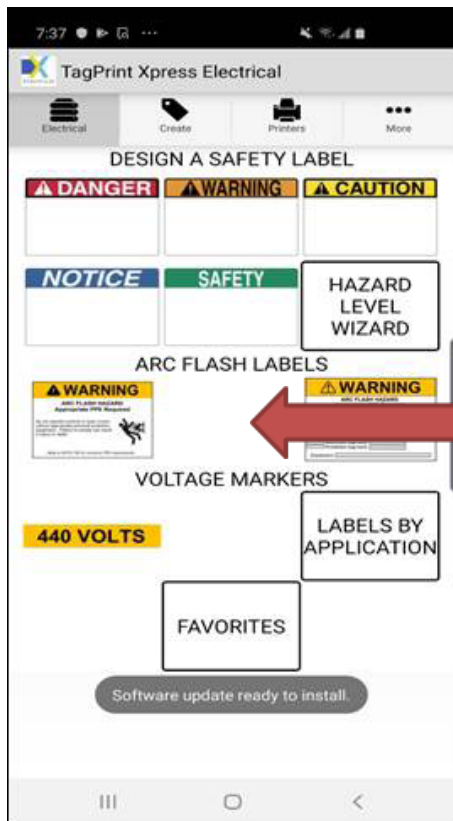


3. Enter a name for the printer. This name can be anything that will be memorable.



Step 2: Adding the printer to TagPrint Xpress Electrical *cont.*

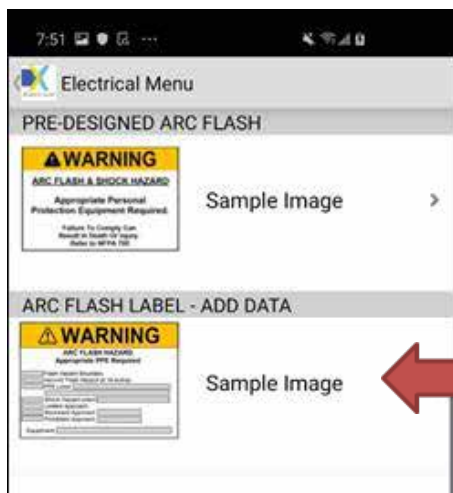
4. Enter the printer's IP Address as identified in Step 1.
5. If the printer has a cutter, select "Cut Enabled." All other options should remain on the defaults.
6. Select "Test Connection" to verify that the printer and the app are configured correctly.
7. Select "Save."



Step 3: Printing a label

For this example, we will show how to print an “Arc Flash” label from a preset. This is the basic process for using the app for all label types.

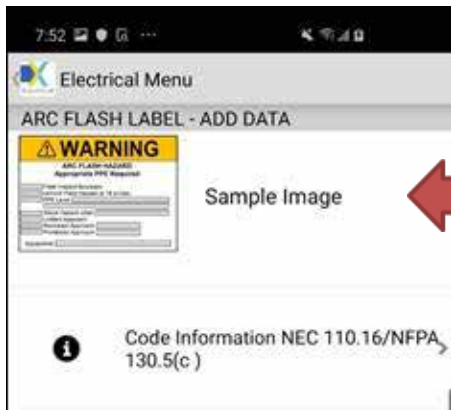
1. Navigate to the “Electrical Labels” tab and Select “Arc Flash Labels.”



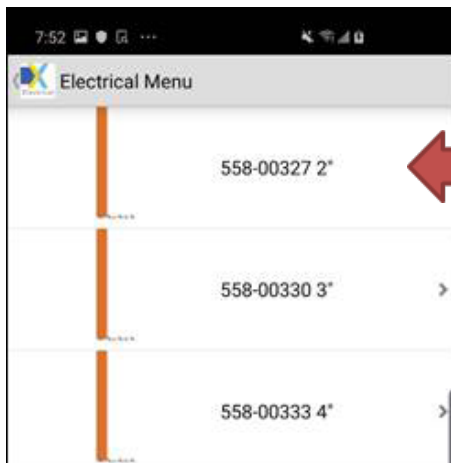
2. Select “Arc Flash Label – Add Data”

Step 3: Printing a label *cont.*

3. Select Example Image.

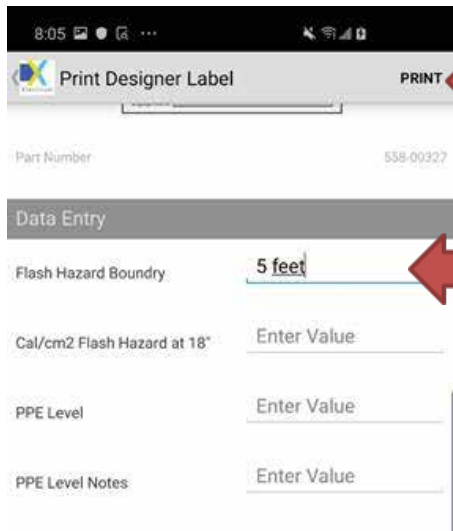


4. Select appropriate width; for this example, select 2”.



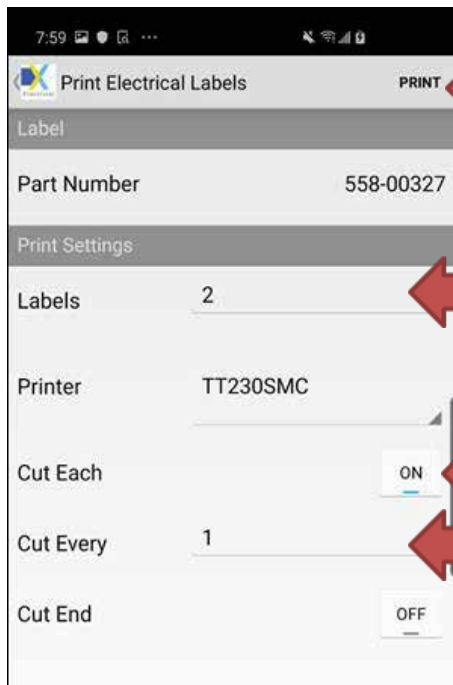
5. To enter data, select the blank space to the right of “Flash Hazard Boundary.”





Step 3: Printing a label *cont.*

6. Enter the appropriate values and select "Print" when finished.



7. On final print screen, select number of labels, if you want to cut them and how often to cut. (cutting every label = "1" or every 2 labels = "2"). Then, tap "Print."

For more information about HellermannTyton products, please visit us online at www.hellermann.tyton.com.