

UPDATING FIRMWARE ON THE TTM430/TTM460 or TT4030 SERIES PRINTERS

It is strongly suggested that you never attempt to update the firmware on your printer. It should never be required for normal operation.

If you attempt to do it, you must first determine if the printer is a CAB printer or a HellermannTyton OEM printer. You can find this under - (settings->info).

If a HellermannTyton printer, you would use a file that might be named similar to this one:

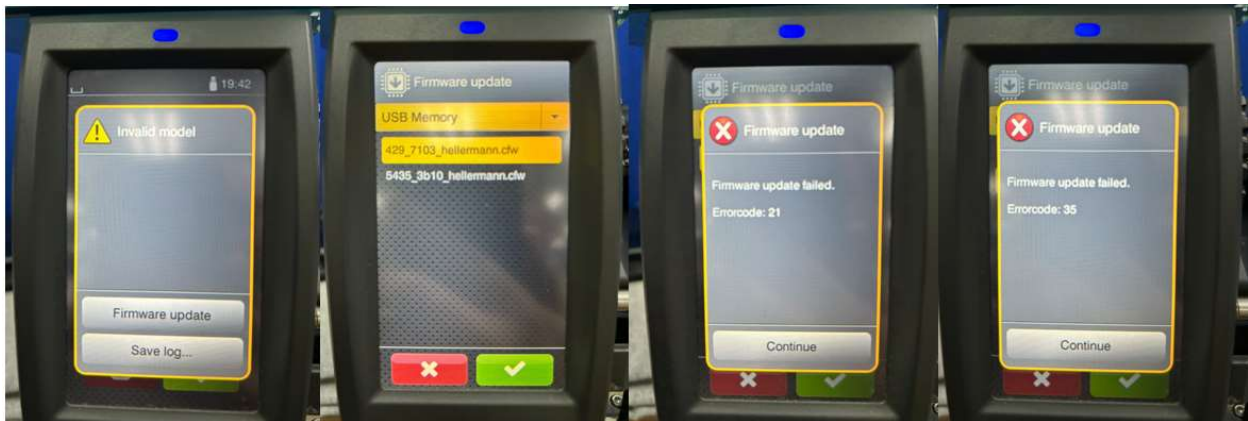
5455_5120_hellermann.cfw. (This one is for the TT4030 printer)

If it is the CAB version of the printer, you can go to the <https://www.cab.de> site and search for your model and firmware.

The firmware file may look as follows:

5455_5120.cfw. (This one is for the Squix printer)

You must be certain the firmware version is correct. If you download a wrong version or a version meant for another model, you will permanently damage your CPU and will need to replace the CPU (circuit board) to get the printer back up and running. If you attempt this and see these types of errors, your CPU is no longer functional.



You cannot switch from the CAB firmware to the HellermannTyton firmware. If you encounter this error, the CPU must be replaced.